

Estimates of 2014/15 vaccine effectiveness (VE) against influenza related hospitalizations from the Global Influenza Hospital Surveillance Network (GIHSN) using a test negative case-control design.

Joan Puig-Barberà¹, Angels Natividad-Miralles¹, Elena Burtseva², Hongjie Yu³, Selim Badur⁴, Jan Kyncl⁵, F. Xavier López-Labrador^{1,6}, Maria Pisareva⁷, Svetlana Trushakova², Benjamin J. Cowling⁸, Kubra Yurtcu⁴, Ainara Mira-Iglesias¹, Elizaveta Smorodintseva⁷, Lidiya Kisteneva², Luzhao Feng³, Sevim Mese⁴, Kirill Stolyarov⁷, Lyudmila Kolobukhina², Peng Wu⁸, Tulay Bagci⁴, Lubov Voloshchuk⁷, Veronika Afanasieva², Qin Ying³, Anna Sominina⁷ for the Global Influenza Hospital Surveillance Study Group (GIHSN).

¹ Fundación para el Fomento de la Investigación Sanitaria y Biomédica de la Comunidad Valenciana (FISABIO), Valencia, Spain.

² D.I. Ivanovsky Institute of Virology FGBC "N.F. Gamaleya FRCEM" Ministry of Health of Russian Federation, Moscow, Russian Federation.

³ Division of Infectious Disease, Key Laboratory of Surveillance and Early-Warning on Infectious Disease, Chinese Center for Disease Control and Prevention, Beijing, China.

⁴ National Influenza Reference Laboratory, Istanbul Faculty of Medicine, Istanbul University, Istanbul, Turkey.

⁵ The National Institute of Public Health (SZÚ) Šrobárova 48 100 42, Praha 10, Czech Republic.

⁶ Consorcio de Investigación Biomédica de Epidemiología y Salud Pública (CIBERESP), Instituto de Salud Carlos III, Madrid, Spain.

⁷ Research Institute of Influenza, Saint Petersburg, Russian Federation.

⁸ School of Public Health, Li Ka Shing Faculty of Medicine, The University of Hong Kong, Hong Kong Special Administrative Region, China.

Introduction

The Global Influenza Hospital Surveillance Network (GIHSN) is a public-private partnership between various Public Health institutions and Sanofi Pasteur. The main goal of the GIHSN is to promote a better knowledge of influenza epidemiology. From mid November 2014 to mid May 2015 influenza-like-illness (ILI) admissions were prospectively screened for influenza viruses by 24 hospitals across Russia Federation; Czech Republic, Turkey, China and Spain (Figure 1). A common, standardized operational protocol was used across sites to monitor influenza vaccine effectiveness (IVE).

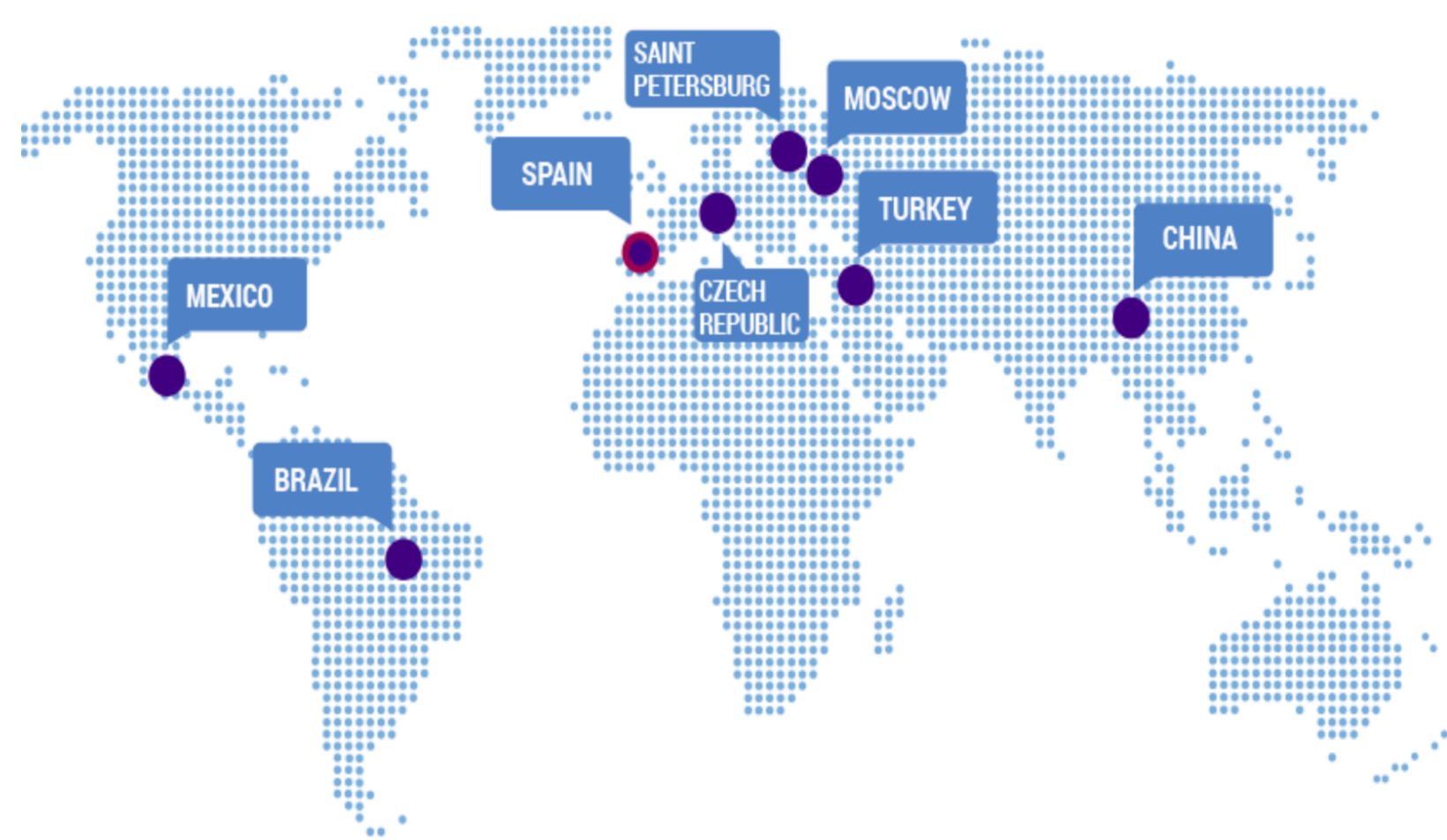


Figure 1. Global Influenza Hospital Surveillance Network (GIHSN)

Methods

Vaccination status was compared between individuals who tested positive (cases) and those who tested negative (controls) for influenza virus by RT-PCR. Patients who had received at least 1 dose of current season vaccine at least 15 days prior to illness onset were considered vaccinated.

Influenza vaccine effectiveness (IVE) was estimated as $(1 - \text{odds ratio}) \times 100\%$. Logistic regression with site modeled as random effect, was used to calculate a combined effect across sites.

Results

Over 20.000 patients were enrolled of whom 9.590 (47%) were eligible. 2.177 (23%) of those eligible were influenza positive.

Among positives, 1.233 (57%) were A(H3N2), 115 (5%) were A(H1N1)pdm09, 665 (31%) were flu B/Yamagata -lineage and only 11 (5%) were B/Victoria lineage,

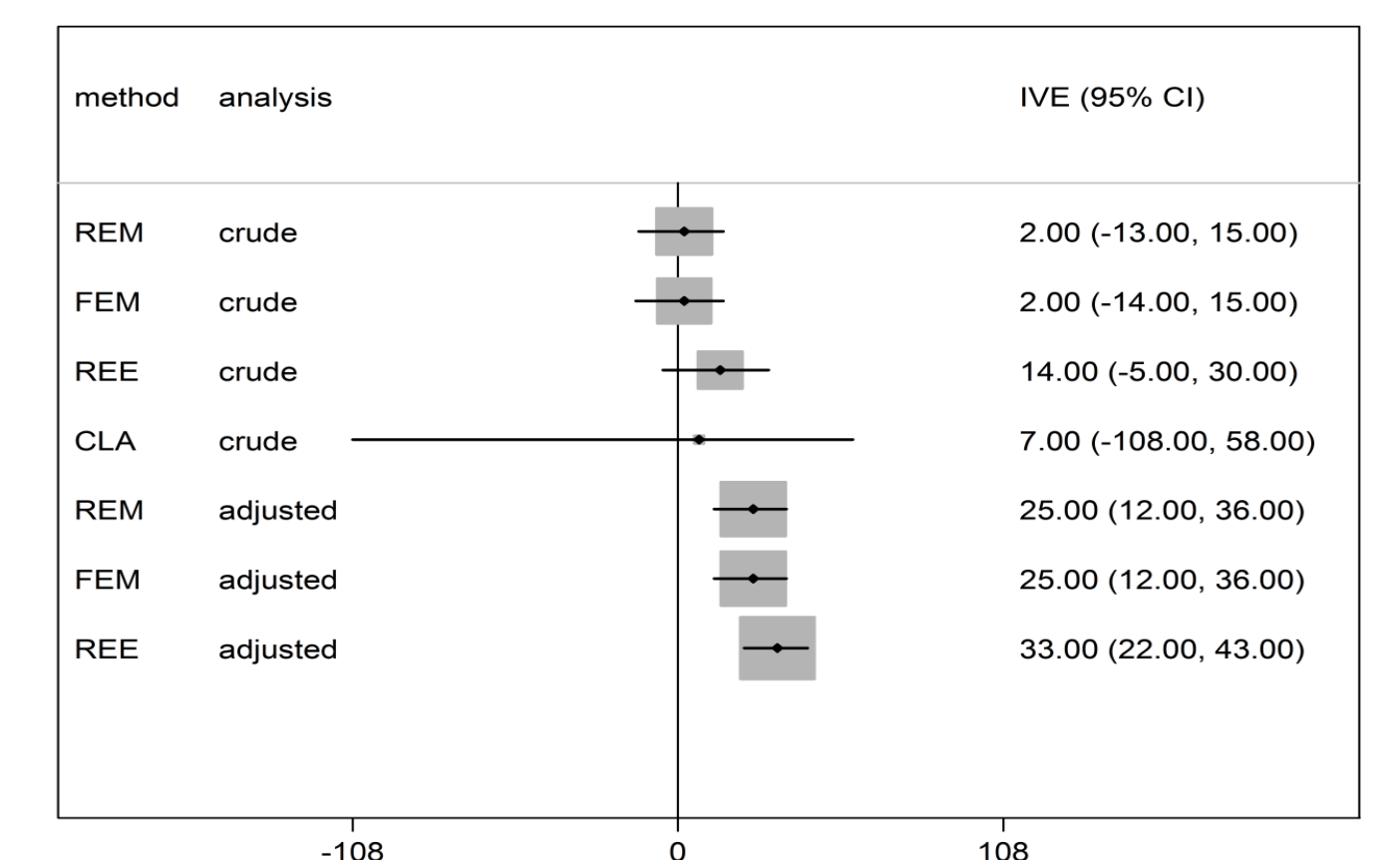
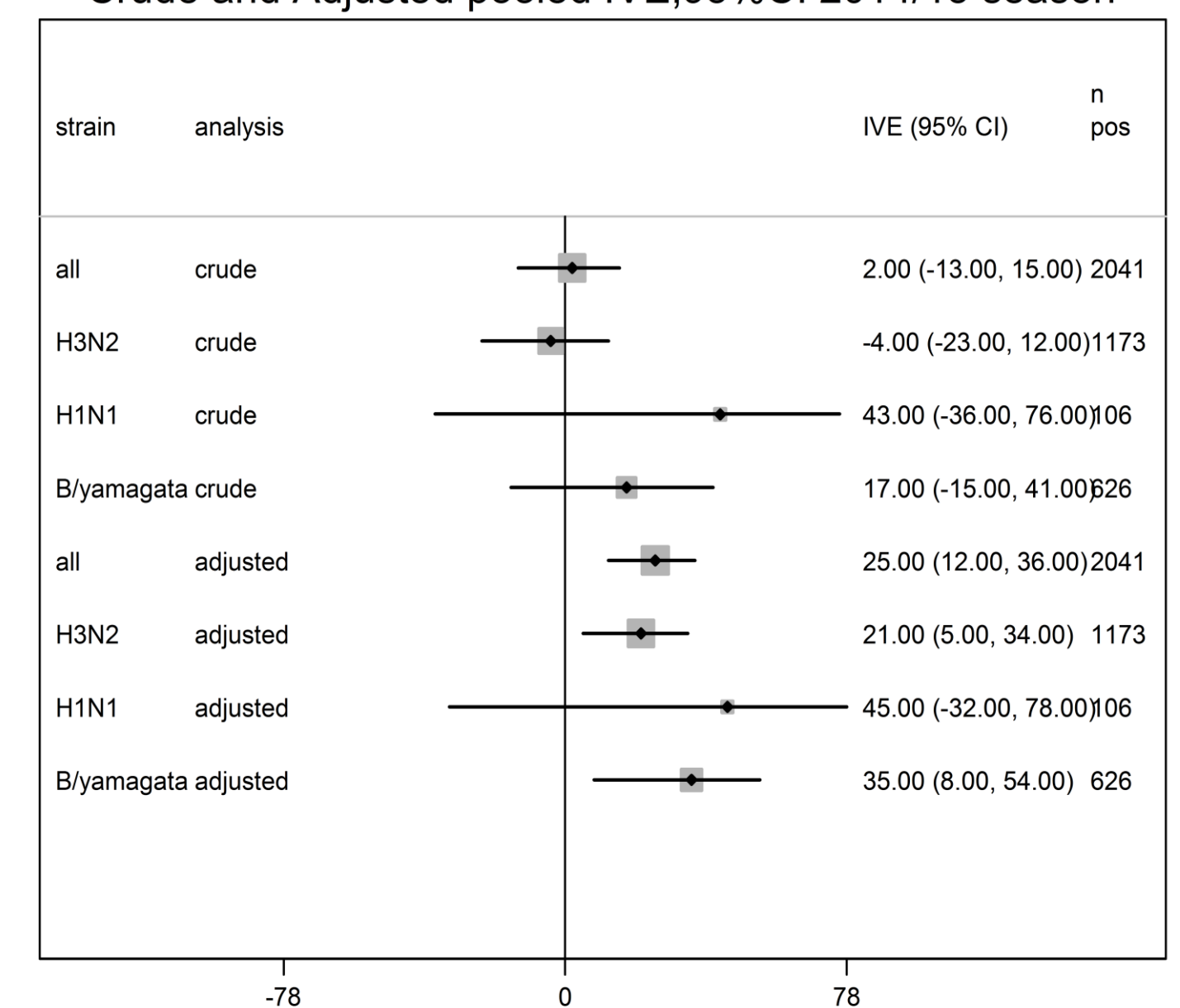
Overall 2.035 (24%) admissions had received the vaccine; 443 (22%) of influenza positive were vaccinated and 1.598 (25%) influenza negative were vaccinated.

Pooled adjusted IVE against any influenza was 25% (95%CI: 12%, 36%) (Figure 2).

Adjusted IVE was 21% (95%CI: 5%, 34%) against A(H3N2), 45% (95%CI: -32%, 78%) against A(H1N1)pdm09 and 35% (95%CI: 8%, 54%) against B/Yamagata.

VE against any influenza ranged from -1% (95%CI: -33%, 23%) in patients under 65 years of age to 27% (95%CI: 12%, 39%) among patients 65 years and older (P value for interaction=0.054).

Crude and Adjusted pooled IVE,95%CI 2014/15 season



Sensitivity analysis

REM: random effects models for individual level analysis. FEM: fixed effects models for individual level analysis. REE: robust standard errors for individual level analysis. CLA: cluster-level summary measures

Figure 2. Crude and adjusted influenza vaccine effectiveness by strain. An methods sensitivity analysis.

Discussion

Our moderate IVE estimates against A(H3N2) were consistent with the predominance of antigenically drifted A(H3N2) viruses during 2014/15 season in the Northern-Hemisphere. VE against B/Yamagata viruses was higher than VE against A(H3N2). VE estimates were higher in elderly than in young subjects. Sparse data did not support estimation of VE against A(H1N1)pdm09 or among 0.5-65 years-old patients.